

Finally: A Complete Telemedicine Solution



Whether this is your first telemedicine system or one of many, our mobile medical carts come complete with everything you need; videoconferencing, store & forward interactive collaboration software, real-time inband data channel in both H.323 and H.320 calls, medical peripherals, and room to expand. These units are flexible and can be tailored to your specific applications and they can be used in all medical specialties.

Featuring:

- Videoconferencing
- Store and Forward
- Medical Peripherals
- Medical Scopes
- Transportable



seeMore Features

Dual 19" LCD High Definition TV / Hi-Res Monitors
Up to 1.536 kbps IP, Up to 512K ISDN, Up to 30 fps
Inband Data Channel for Real-time Data Collaboration
Head Pivots for Stand Up or Sit Down Operations
Software Controlled 4X4 Matrix Video Switch Box
16x Pan / Tilt / Zoom Camera w/ Remote Control
Professional Quality Adjustable Camera Arm
Hardware Based Video Conference CODEC
High Quality Boundary Microphone
Locking Storage Cabinet, 22" Square Foot Print
Dual Core Class Computer w/ MS Office
Second Opinion Pro Store and Forward Software
General Video Exam Scope
Electronic Stethoscope, Digital Camera and More!

IRIS Description

Just like seeMore, IRIS is a full featured mobile medical cart consisting of similar components, it is just more compact and has a smaller footprint.

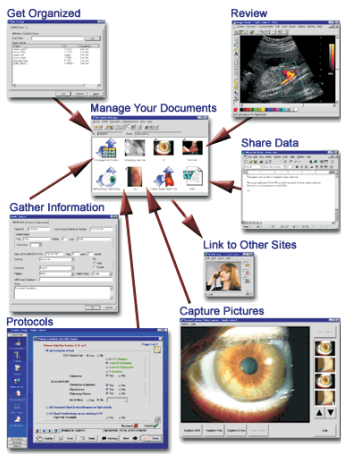


Custom Configurations Available



Interactive Realtime Imaging Solution

Second Opinion Dramatically Improves the Way Information is Shared Within the Medical Community



Store & Forward Collaboration Software

Second Opinion™ Professional was created to capture images, media clips, text documents and custom database forms, as well as more complex information, into a patient folder. It features integrated security and sophisticated annotation tools. The database is designed to be shared by many users across multiple locations, including Wide Area Networks (WAN). It also supports integration with other products and custom forms written in most of the major programming languages.

Real-time collaboration (whiteboarding) and data transfer (electronic stethoscope) is included.



Technical Specifications (CODEC)

VIDEO STANDARDS

- › H.261, H.263, H.264
- › H.263+, H.263++*

VIDEO INPUTS

- › 2 composite + 2 S-video or
- › 4 composite + 1 S-video or
- › 6 composite

VIDEO OUTPUTS

- › 1 composite
- › 1 S-video
- › Video display on PC screen

VIDEO FORMAT

- › NTSC, PAL

H.323 FEATURES

- › Resource Reservation Protocol (RSVP)
- › Network Address Translation support (NAT)
- › IP adaptive bandwidth management including flow control
- › Packet Loss Correction
- › IP address conflict warning

NETWORK BANDWIDTH

- › H.320 up to 1,536 kbps
- › H.323 up to 1,536 kbps

DATA STANDARDS

- › T.120 (NetMeeting™ support)
- › H.281 (remote camera control)
- › Codec data channels for
- › High speed file transfer

CONTROL IN/OUTPUTS

- › 2 RS232 interfaces for camera control

VIDEO FEATURES

- › Snapshot
- › Picture in Picture
- › Dual monitor support (PC screen + analog)
- › Video format separately definable
- › PC video display scalable to full screen

REGULATORY APPROVALS

- › Safety, emissions, and immunity for US, Canada, Europe, Japan, and Australia

AUDIO STANDARDS

- › G.711, G.722, G.723.1, G.728

AUDIO OUTPUTS

- › 1 Headset
- › 2 Speaker (line level)
- › 2 Line (line level)
- › 2 Auxiliary (line level)
- › 2 To sound card (line level)

AUDIO INPUTS

- › 1 Headset (2.2 V phantom)
- › 1 Electret mic (2.2 V phantom)
- › 2 Camera mic (line level)
- › 2 Line (line level)
- › 2 Auxiliary (line level)
- › 2 Balanced mic (24 V phantom)
- › 2 From sound card (line level)

ECHO CANCELLER

- › High quality acoustic echo cancel
- › 192 ms tail length

Video Medical Scopes

The Camera and Illumination System included in our system has interchangeable heads. Attachments are available for a variety of different medical specialties. It can be configured as an Otoscope, Colposcope, Intraoral Camera, Dermoscope, Rectoscope, Irisscope and an Endoscope. This camera system has both s-video and composite video outputs and has the ability to capture four images inside of the camera itself. The captured images can be looked at one at a time or tiled in a quad fashion. It is a single cable system; both the fiber optic light and video signal are contained in the same cable.



Second Opinion Telemedicine Solutions, Inc.

3848 Del Amo Blvd, Suite 303, Torrance, CA 90503

310-802-6300 soSales@soTelemed.com www.soTelemed.com